

STEER CLEAR

SAFETY NOTICE TO ALL BOAT OPERATORS



Port of Melbourne
Corporation



DON'T ANCHOR IN SHIPPING CHANNELS OR TRANSIT ONLY ZONES.

- Don't tie up to navigation aids e.g. buoys or channel markers.
- It is dangerous and illegal. Penalties apply.

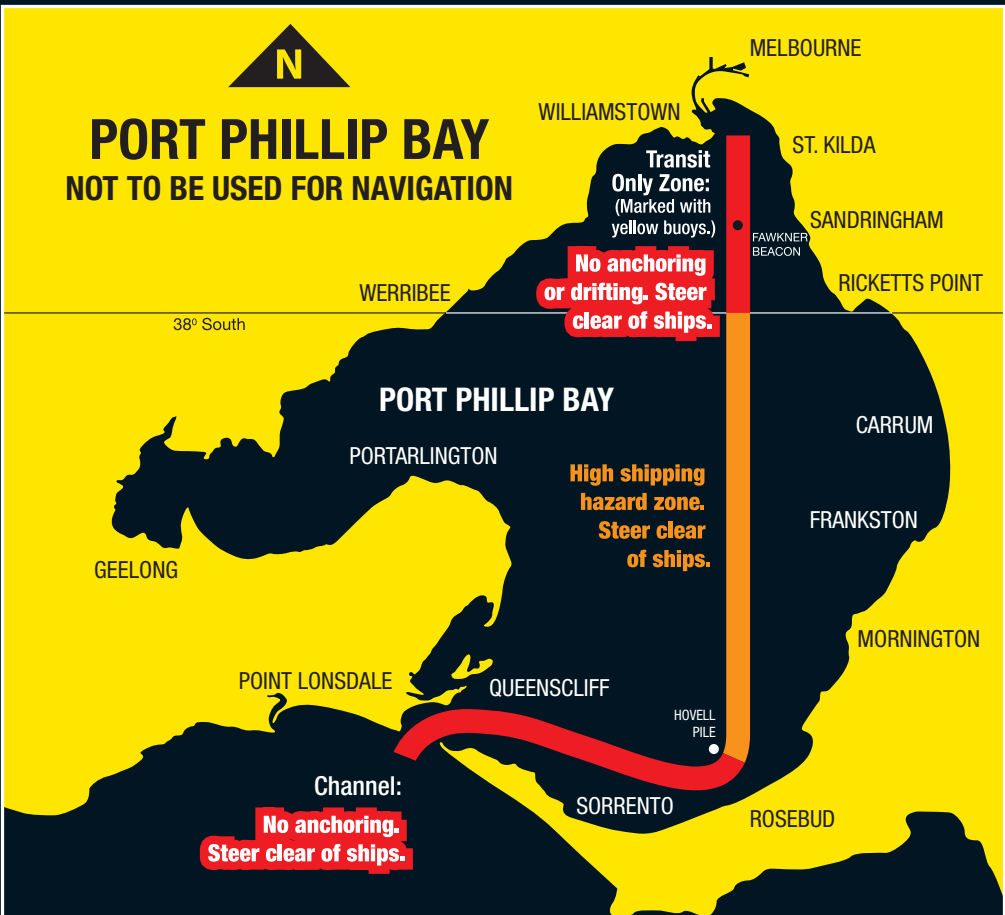
ALWAYS STEER CLEAR OF SHIPS.

- Small boats must keep clear of ships.
- It is dangerous, and often impossible, for ships to change course quickly.
- Just because you can see the ship, don't assume the ship can see you.





PORT PHILLIP BAY NOT TO BE USED FOR NAVIGATION



STEER CLEAR

SAFETY NOTICE TO ALL BOAT OPERATORS

Anchoring in shipping channels and transit only zones is extremely dangerous and illegal.

Ships can weigh up to 100,000 tonnes and do not have brakes. They cannot stop or change course suddenly. They are often travelling faster than you think.

For your own safety, steer clear of ships at all times.

不要在船運航道上或僅限通行區域裡下錨泊船。違者將受處罰。保持遠離這些區域。

لا ترسو أبدا في قنوات الملاحة البحرية أو المناطق المحددة للعبور فقط. أن الإخلاء بذلك يعرضك للعقوبات. قد قاربك بعيدا عن هذه المناطق دائما.

Đừng bỏ neo trong kênh tàu bè giao thông hay các khu vực dành riêng để lưu thông mà thôi. Vi phạm sẽ bị phạt. Luôn luôn tránh xa.

Ticari gemi şeritleri (kanalları) ya da transit bölgelerde (transit only zones) demirlemeyiniz. Cezalar uygulanmaktadır. Daima sakınınız.

For more information contact:
Port of Melbourne Corporation
on 1300 857 662 and ask for Navigation Services.

11/2010

Port of Melbourne
Corporation

